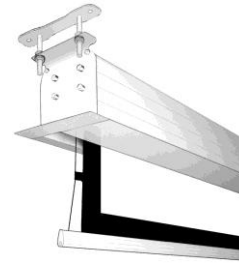


MASKED TENSION

Enclosed electrically unrolled screen

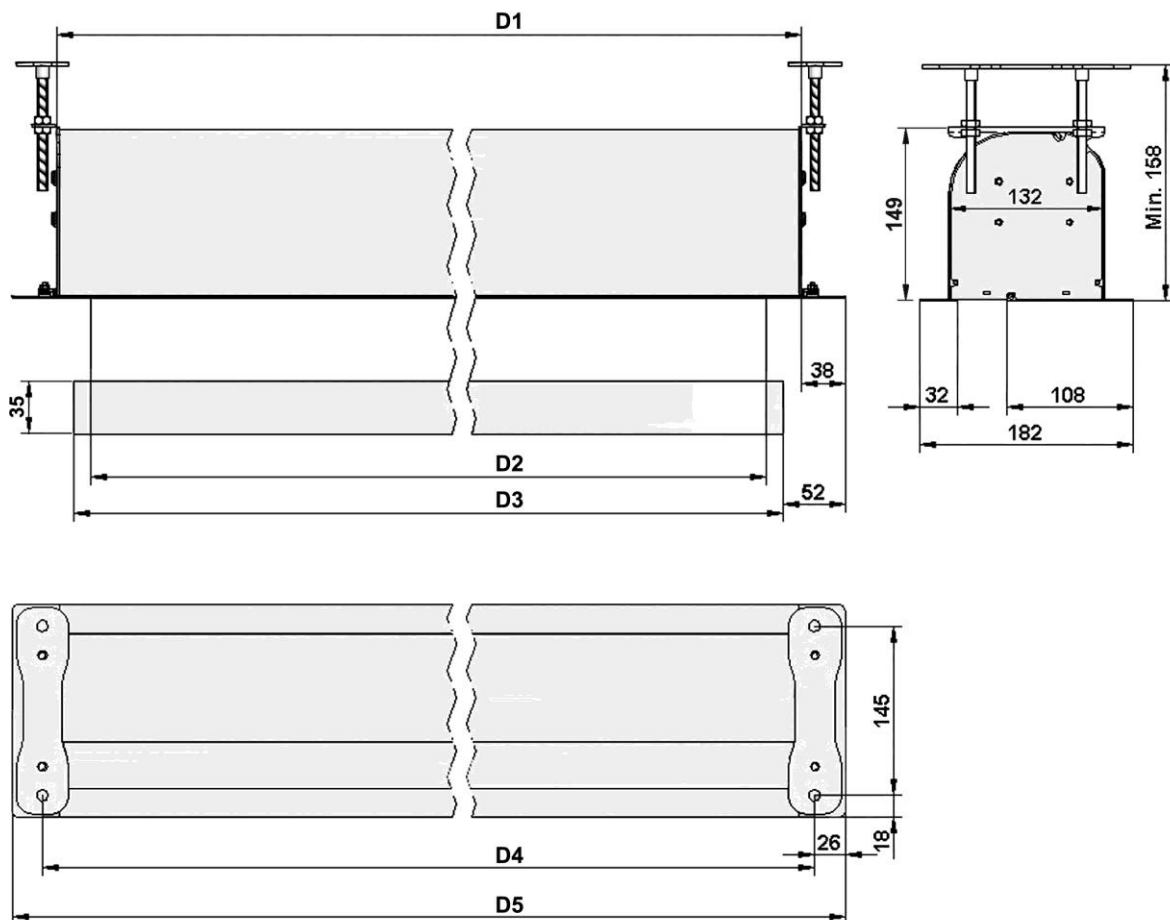
LIST OF ITEMS:

- Electric screen,
- Mounting elements – 2 pcs.,
- Button switch,
- Assembly kit,
- Mounting instruction manual,



1. INSTALATION:

A. Dimension table

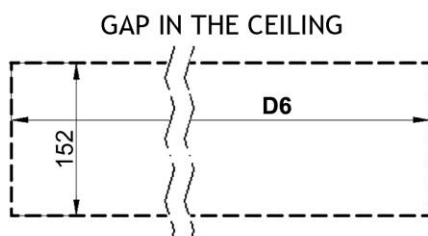


$$D1 = D2 + 159$$

$$D3 = D2 + 20$$

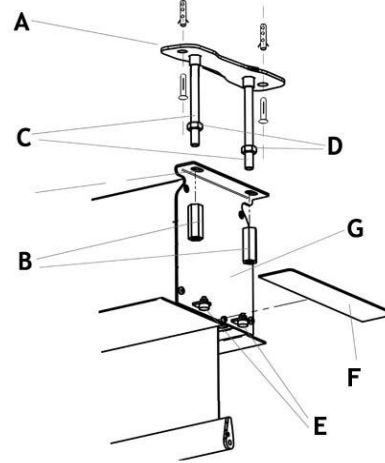
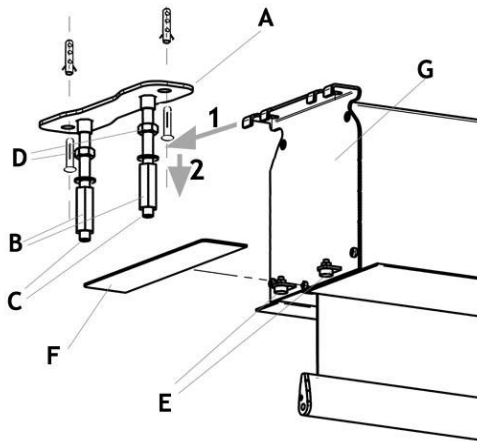
$$D5 = D2 + 135$$

$$D6 = D2 + 180$$



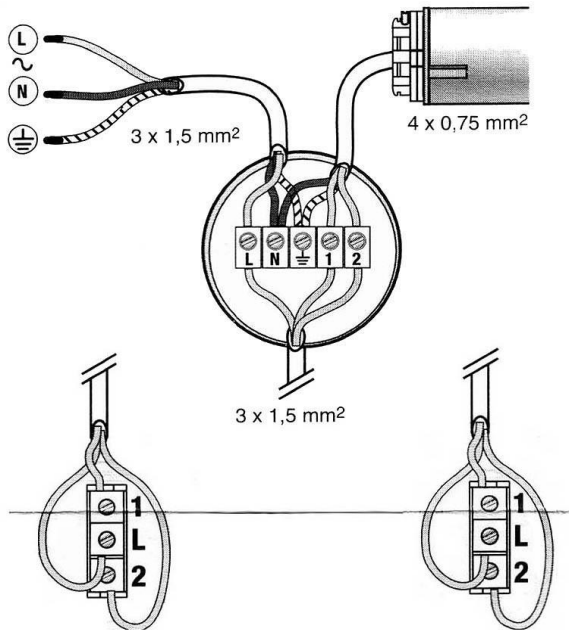
WIDTH (D2)	SIZE (mm)					
	D1	D2	D3	D4	D5	D6
2 000	2059	2000	2030	2083	2135	2079
2 200	2259	2200	2230	2283	2335	2279
2 400	2459	2400	2430	2483	2535	2479
2 600	2659	2600	2630	2683	2735	2679
2 800	2859	2800	2830	2883	2935	2879
3 000	3059	3000	3030	3083	3135	3079
3 500	3559	3500	3530	3583	3635	3579
3 800	3859	3800	3830	3883	3935	3879

B. **PLEASE NOTE!** Installer decides, which wall plugs and screws are appropriate for the basis.



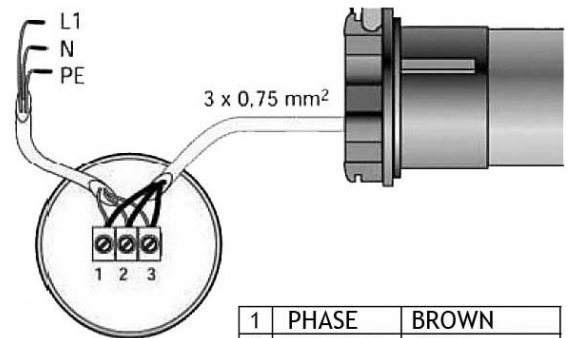
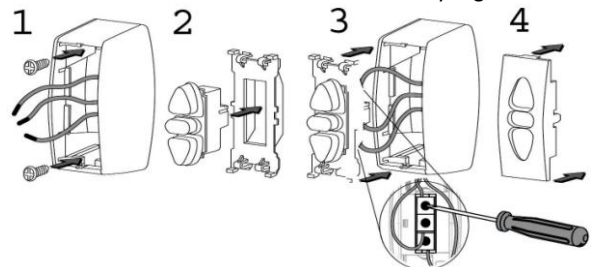
2. ELECTRICAL CONNECTION:

A.



ZACISK	CURRENT DESIGNATION	CABLE FROM THE DRIVE
L	PHASE - L	
N	ZERO - N	BLUE
⊕	EARTH -	YELLOW / GREEN
1	UP DIRECTION	BLACK
2	DOWN DIRECTION	BROWN

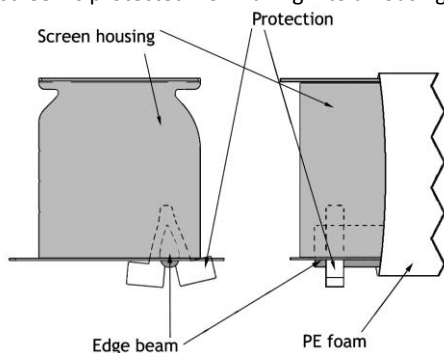
PLEASE NOTE! The electrical connection should be performed by a person with appropriate certification and in accordance with health and safety regulations.



230V - 50 Hz
3 x 1,5 mm²

1	PHASE	BROWN
2	NEUTRAL	BLUE
3	EARTH	YELLOW-GREEN*

B. **SAFETY** in transport: **Keep and do not disassemble the bottom bar from the screen until the end of the installation.** Removal of the protection before finishing the installation can cause the bar to fall into a housing of a screen and damage the projection surface. Before each transportation make sure that the bar of the screen is protected from falling into a housing.



C. **Optional control:**

The electric screen can be upgraded with wireless radio (RC) or infrared (IR) controllers. When programming the stop positions, use the programming manual.

RC:



remote controls RC

receivers RC

IR:

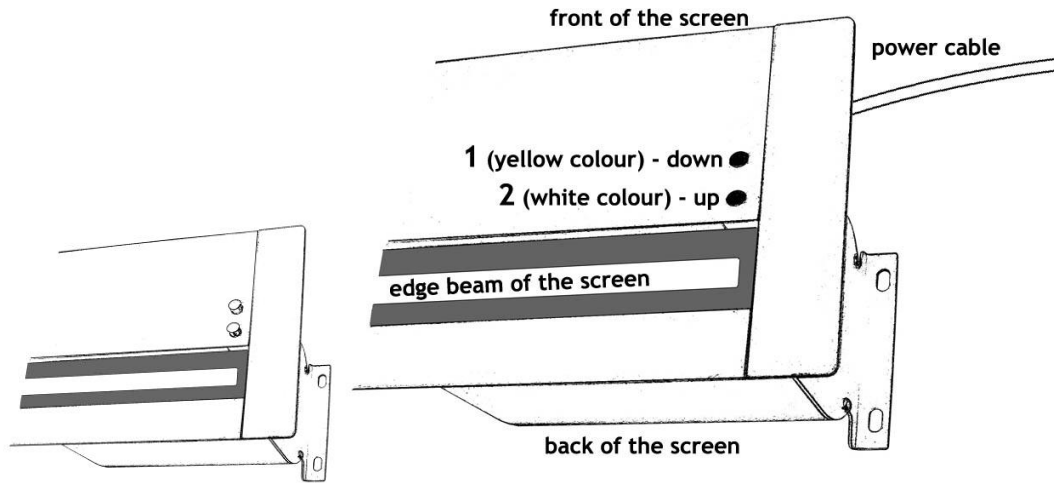


mounted receiver IR

TRIGGER 12V
TRIGGER 230V

EXTEND IR

3. REGULATION:



POSITION - SCREEN UNROLLED

Additional adjustment of settings (other than factory defaults) is possible using the screw marked 1 (yellow). Only by authorised persons.

LIMITING SCREEN UNROLLING: In order to unroll the screen less than its factory setting, turn the key to the left.

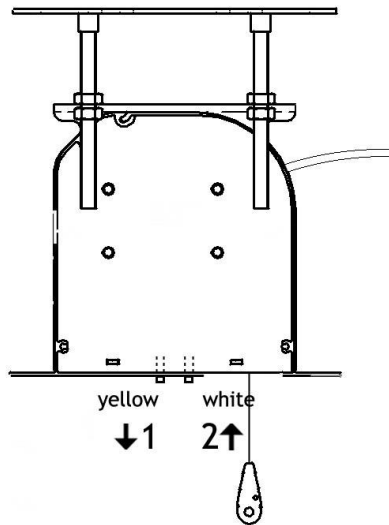
INCREASING SCREEN UNROLLING: In order to unroll the screen more than its factory setting (by 5 cm at most), turn the key to the right. An increase in screen unrolling of more than 5 cm may cause permanent damage to the screen.

POSITION - SCREEN ROLLED UP:

Additional adjustment of settings (other than factory defaults) is possible using the screw marked 2 (white). Only by authorised persons.

LIMITING EDGE BEAM UNROLLING: In order to unroll the lower edge screen beam less than its factory setting, turn the key to the right.

INCREASING EDGE BEAM UNROLLING: In order to unroll the lower edge screen beam more than its factory setting (by 5 cm at most), turn the key to the left. An increase in screen unrolling of more than 5 cm may cause permanent damage to the screen.



4. TECHNICAL DATA:

Screen (surface):	URAN (Matt White) URAN GREY (Cine Grey) URAN PROFESSIONAL (Professional Matt White) URAN PEARLESCENT (Pearlescent)
Image aspekt ratio:	Square Video Cine Wide 1:1 4:3 16:9 16:10
Power supply:	230V / 50 HZ

Manufacturer: VIZ-ART Automation
tel.+48 22/6138899 www.viz-art.eu

Rules of safe operation of VIZ-ART AUTOMATION equipment.

SAFETY INFORMATION CAUTION

To ensure safety of the personnel, make sure to follow the guidelines provided in this instruction manual. Keep the instruction manual for future reference.

- Do not allow children to play with the device controller (switch or remote control).
- Do not leave device controllers within the reach of children.
- Inspect the equipment assembly periodically to identify and repair any damages.
- If any damages are identified, do not use the equipment until the necessary repairs are made.
- Keep appropriate distance from the equipment during operation. In case of a failure, the equipment may constitute a risk of injury or wounds.
- Do not install any items other than those specified in the equipment instruction manual. All installation and mounting works should be done by an engineer with appropriate licenses.
- Inappropriate mounting may damage the product or cause injury.
- Use only elements compliant with the mounting instructions.
- It is prohibited to perform any steps that may damage the power supply cord or plug.
- Do not modify the power cord, i.e. do not make any structural modifications, do not place the cord in immediate vicinity of hot objects, do not bend or twist the cord, do not pull the cord, do not place any heavy objects on the cord, and do not coil the power cord.
- Using the equipment with a damaged power cord may cause electrocution or shorting of the circuits and fire.
- Do not touch the power cord or plug with wet hands.
- Always follow the guidelines provided in this instruction manual and in the equipment mounting instructions.
- Before installing the equipment, make sure it is complete, free of defects, compliant with your order, and has not sustained damage in transport.

INSTALLATION GUIDELINES

- The equipment should be installed by a qualified engineer, in accordance with the guidelines provided in the mounting instructions. Electrical connections should be made by a specialist with an appropriate license.
- Install the equipment using screws and mounting elements appropriate for the conditions of the installation, to which the lift is mounted, and stable, original auxiliary elements, dedicated for the specific lift model.
- After mounting the equipment, before first use, check if it is mounted as per the instructions, and level. If the equipment is not level, adjust the mounting. Do not use equipment that is not properly installed.
- Do not modify or unscrew elements of the equipment, as this may cause a risk of permanent damage to the equipment and/or the safety of the users.

WARRANTY CONDITIONS

The warranty period for the device is 24 months from the date of purchase indicated on the original receipt.

- 1) The warranty period for the device's electric drive is 60 months.
- 2) The warrantor commits to fix free of charge damage suffered by a device de-livered to the service point that demonstrates defects resulting from defects in workmanship or materials, which become noticeable during the warranty pe-riod.
- 3) The warranty does not cover:
 - a) damage caused by use of the device in a manner other than that described in the user manual,
 - b) damage caused by improper storage or transport,
 - c) mechanical damage,
 - d) abrupt changes in electrical grid voltage,
 - e) disassembly and reassembly,
- 4) Defects will be removed within 14 days from the date the device is accepted on warranty at a service point.
- 5) Service point address



Manufactured after 13.08.2005.

Do not dispose of used electrical and electronic equipment together with municipal waste, due to the presence of substances hazardous to the environment in the equipment. Such devices should be delivered to a collection point for recycling. Information on collection points is available from local government authorities or in stores.



DECLARATION OF CONFORMITY

VIZ-ART AUTOMATION



I hereby declare, with sole responsibility, that the products:

Electric screens: SUPERNOVA, SUPERNOVA TENSION, MASKED, MASKED TENSION, ELLIPSE, ELLIPSE TENSION, BUSINESS Plus,

to which this declaration relates, in accordance with:

- the Low Voltage Directive 73/23EEC together with the modifications of Directive 93/68/EEC
- EMC Directive 89/336/EEC along with its amendments 92/31/EEC, 93/68/EEC i 91/263/EEC

comply with the following European standards:

EN 60335-2-97 with reference to EN 60335-1

EN 55014-1, EN 55014-2, EN 61000-3-2, EN 61000-3-3

and are CE certified.

