

# SUPER NOVA

**Advantages of the screen:** new casing design; selection of LED backlight; best projection surfaces.

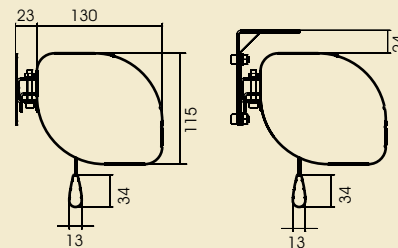
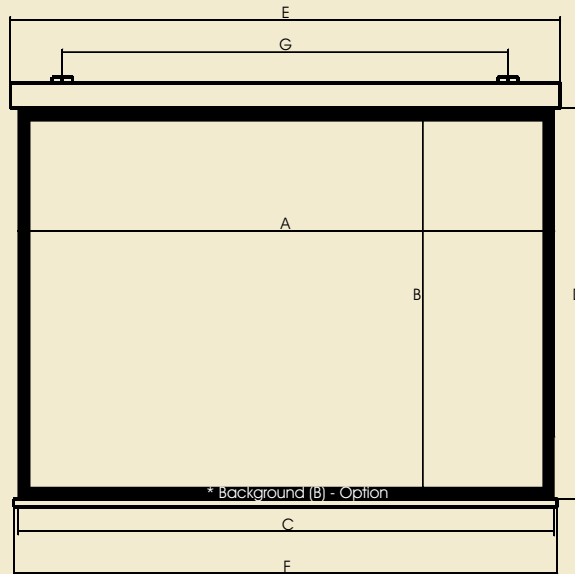
**Functionality:** wide range of types projection surfaces available; stylish aluminium casing\*; full customization; installation possible in a window; upper top BB; Somfy drive with 5 years warranty; control options: IR and RF, Trigger, RS232.



Projection screens that, thanks to the latest white (or PIANO according to RAL\*) casing design along with the chosen projection surface and full customization, mean that the screen fulfills the highest expectations of customers. Discreet LED\* lighting for those who value uniqueness.



**123 Easy Install**



$$\begin{aligned}
 *C &= A + 100 \\
 *D &= B + 100 \\
 E &= C + 60 \\
 F &= C + 20 \\
 G &> C - 800 \text{ i } G < C - 300
 \end{aligned}$$

| Width (cm)     | Size (mm) |      |       |      |       |      |
|----------------|-----------|------|-------|------|-------|------|
|                | 4:3       |      | 16:9  |      | 16:10 |      |
|                | C         | D    | C     | D    | C     | D    |
| SUPER NOVA 180 | 1 800     | 1350 | 1 800 | 1020 | 1 800 | 1130 |
| SUPER NOVA 200 | 2 000     | 1500 | 2 000 | 1130 | 2 000 | 1250 |
| SUPER NOVA 220 | 2 200     | 1650 | 2 200 | 1240 | 2 200 | 1380 |
| SUPER NOVA 240 | 2 400     | 1800 | 2 400 | 1350 | 2 400 | 1500 |
| SUPER NOVA 260 | 2 600     | 1950 | 2 600 | 1470 | 2 600 | 1630 |
| SUPER NOVA 280 | 2 800     | 2100 | 2 800 | 1580 | 2 800 | 1750 |
| SUPER NOVA 300 | 3 000     | 2250 | 3 000 | 1690 | 3 000 | 1880 |
| SUPER NOVA 350 | 3 500     | 2625 | 3 500 | 1970 | 3 500 | 2190 |
| SUPER NOVA 380 | 3 800     | 2850 | 3 800 | 2140 | 3 800 | 2380 |
| SUPER NOVA 400 | 4 000     | 3000 | 4 000 | 2250 | 4 000 | 2500 |

## Screen SUPER NOVA

|                            |  |
|----------------------------|--|
| Casing                     | aluminium, powder coated RAL   |
| Installation               | <ul style="list-style-type: none"> <li>• ceiling;</li> <li>• wall</li> </ul>   |
| P. surfaces:               | <ul style="list-style-type: none"> <li>• Matt White</li> <li>• Matt White D.</li> <li>• Cine Grey</li> <li>• Perforated M. W.</li> <li>• Professional M.W.</li> <li>• 1,0G • 500g • 150° • 0,5mm</li> <li>• 1,0G • 400g • 150° • 0,35mm</li> <li>• 0,8G • 490g • 170° • 0,5mm</li> <li>• 1,0G • 650g • 150° • 0,5mm</li> <li>• 1,1G • 830g • 150° • 0,7mm</li> </ul> |
| Image aspect ratio         | <ul style="list-style-type: none"> <li>• 4:3</li> <li>• 16:9</li> <li>• 16:10</li> <li>• and more</li> </ul>   |
| Max. Width of base [cm]    | 500  |
| Control system             | <ul style="list-style-type: none"> <li>• wall switch</li> <li>• option: IR RF, Trigger 5-30V, Trigger 230V, RS232</li> </ul>   |
| Back of projection surface | black (except Perforated M. W.)  |
| Power supply               | SOMFY, 230V 50Hz; 42dB   |
| Options                    | <ul style="list-style-type: none"> <li>• „B” - Background</li> <li>• „BB” - top black belt</li> <li>• case colours RAL + LED</li> </ul>  |
| „B” Background Frame       | width - 5cm  |
| Set                        | <ul style="list-style-type: none"> <li>• screen;</li> <li>• mounting instruction manual;</li> <li>• wall switch;</li> <li>• assembly kit;</li> </ul>   |
| Warranty                   | 5 years (power supply)   |
| Producer                   | VIZ-ART Automation Europe  |

